



Kuali OLE – Activities in Germany

Kirstin Kemner-Heek (GBV) / Roswitha Schweitzer (hbz)

Kuali Days UK, London, October 30th, 2013

GBV AND HBZ: INTRODUCTION

Regional Library Service Centers in Germany



- Hosts for regional union catalogues (collaborative cataloguing)
- Located in a heterogeneous software environment for its customers (libraries), data providers and data receivers
- Provide ILS (SaaS), ILL, portals and other services

GBV and hbz

GBV | VZG

union catalogue ...

- for 72 academic libraries, 400 research libraries
- with more than 37 m bibliographic and 89 m holding records
- 122,000 e-journals
2,100,000 online resources (ebooks, articles)
- using OCLC CBS since 1993

 hbz

union catalogue ...

- for ca. 60 academic library systems with more than 1,600 different libraries
- with more than 18 m bibliographic and 40 m holding records
- 120,000 e-journals
700,000 online resources (full text, e-books etc.)
- using Aleph / ExLibris

KUALI OLE: EVALUATION

Motivation

- Current ILS at the end of their life cycle
- Market analysis for our customers
 - Academic libraries
 - Open source and commercial software
- Intention
 - Providing independent information
- Evaluation of Quali OLE
 - Open source software with high potential
 - Developed by and for academic libraries
 - Part of software infrastructure for universities

Beginnings



Beginnings

- First contact with Kualifoundation June 2011
 - Interview with Robert McDonald
- ILS-Workshop in Göttingen (GBV) in March 2012
 - Presentation of Kualifoundation OLE by Michael Winkler
- Agreement GBV and hbz in evaluating Kualifoundation OLE
- Kualifoundation Days, Austin, October 2012
- London, February 2013,
 - International Meeting GOKb/KB+, JISC/Kualifoundation,
 - Meeting with Sharon Penfold, Bloomsbury Consortium
- LIBER, Munich, Germany, August 2013
 - Meeting with Kualifoundation OLE/JISC

Establishing

- Information of German library community:
 - Presentation “Kuali OLE” at the German Library Congress, Leipzig, March 2013
- Project planning
 - Detailed description
 - Roadmap
 - Resource planning
 - Work breakdown structure
- Provision of funds and staff
 - Application for financial resources
 - Job advertisements for developers and system librarians

Getting started



Getting started

- First test installations Quali OLE 0.8 in GBV and hbz, August 2013
- Translation of the OLE user documentation
- GOKb/KB+: integration possibilities of the German union catalog for e-journals (ZDB/EZB)
- Search for pilot/test libraries

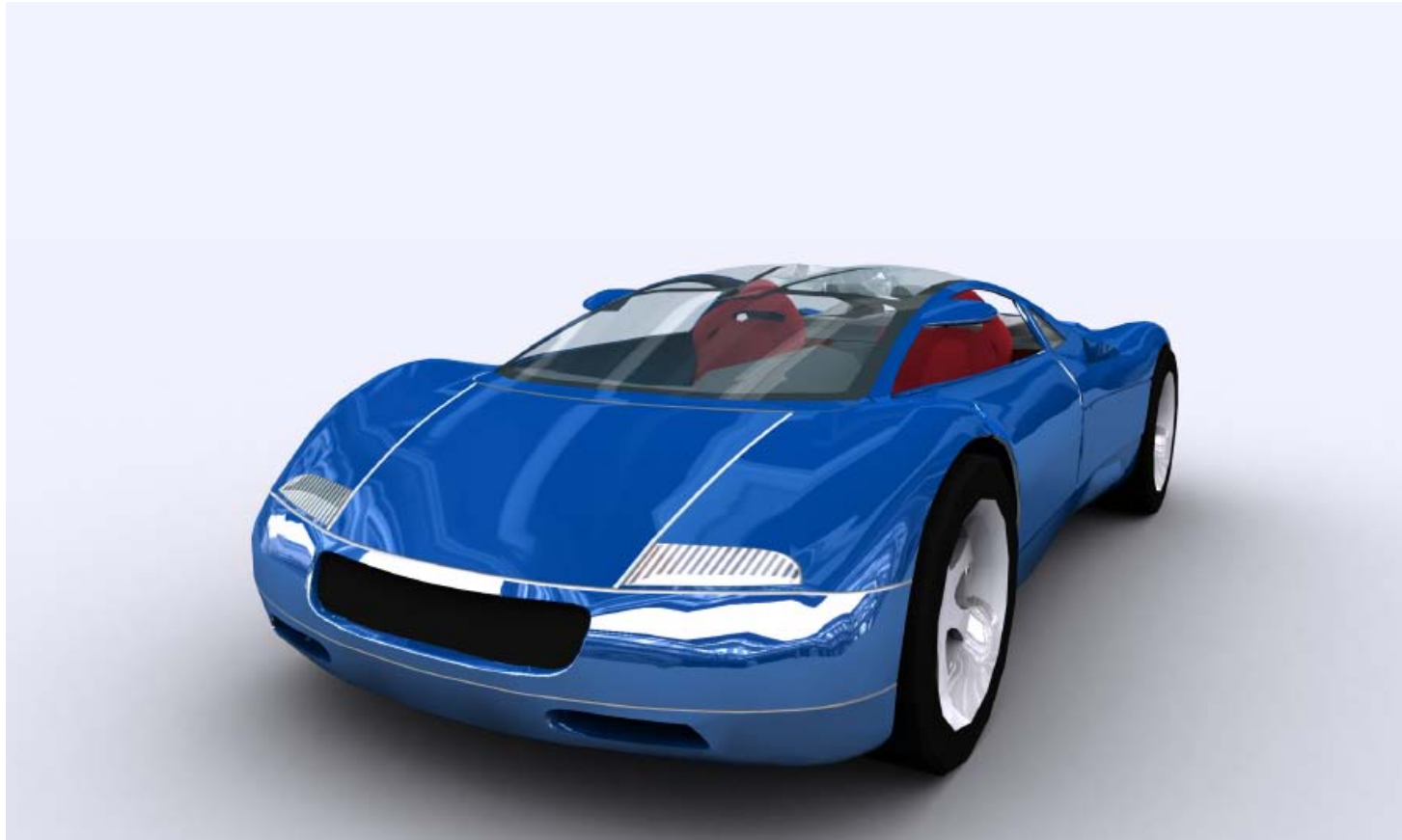
Test installations OLE 0.8

- Current test installation parameters GBV
 - <http://x4200-92.gbv.de:8080/olefs/portal.do>; <http://x4200-92.gbv.de:8080/oledocstore/>
 - Operating System: Linux x4200-92 3.2.0-4-amd64#1 SMP Debian 3.2.46-1x86_64 GNU/Linux
 - Server: SUN Fire X4200: 2 x Dual Core AMD Opteron(tm) Processor 285 SE 2,6 Ghz, 32 GB MM
 - Software version: checked out revision 13754
 - Database: MySQL Server 14.14 Distrib 5.5.31 for Linux
- Current test installation parameters hbz
 - <http://kuali.hbz-nrw.de:8080/olefs/portal.do>; <http://kuali.hbz-nrw.de:8080/oledocstore>
 - Operating System: Linux kuali 3.0.93-0.8-xen#1 SMP (70ed288) x86_64 GNU/Linux, Suse Linux Enterprise Server 11 SP 3
 - Server: Virtual machine Citrix Xen Server Hypervisor, 8 (16) CPU core, 48 GB MM, Hard Disk 1TB
 - Software version: checked out revision 15242
 - Database: MySQL Server 14.14 Distrib 5.5.33 for Linux

Next steps

- Installation OLE V. 1.0, November 2013
- Import of metadata (bibliographic and holdings records)
 - Print and e-resources
 - Two different libraries
- Input of acquisition and circulation data
- Development of evaluation criteria and test scenarios
 - Based on use cases and requirements of our customers
 - Support from GBV Working Group “Local workflows”
- Functional and technical tests, winter 2013/2014
- Documentation of first test results, spring 2014
- Intention for the long run: operational installation for early adopter libraries

Our vision



Thank you.

kemner@gbv.de
schweitzer@hbz-nrw.de



License: Creative Commons Attribution-NoDerivs 3.0 Unported - Creative Commons
Namensnennung - Keine Bearbeitung 3.0 Deutschland Lizenz (CC BY-ND 3.0)
<http://creativecommons.org/licenses/by-nd/3.0/de/>.

Exclusion: Copyrights and licences for Pictures and photos, which are not created by the
authors, will endure. Particularly the use of iStock pictures (slide 10 and 14) require an iStock
license.